



ESHE-6000

Corneal topography



OPHTHALMOLOGY / ENT



ESHE-6000

Corneal topography

Features

Corneal Topography ESHE-6000: By PLACIDO cone, 31 rings, a total of 7936 points.

Through calculation and analysis, used in the clinical diagnosis of corneal astigmatism, quantitative analysis of corneal shape, display the corneal curvature by data or different colors, can display axial curvature map, tangential curvature map, height map, simulated corneal lens map and corneal 3D map.

Can be used in preoperative examination and postoperative effect evaluation of corneal refractive surgery, can guide wearing contact data lens, to improve the accuracy of adaptive contact lens.

Specification

Measuring method: Placido cone

Coverage: 10.91mm (Diameter)

Measuring range for curvature radius: 5.5mm-10.0mm

Diopter range: 33.75D-61.36D

Precision: ± 0.02 mm

Placido rings: 31 rings

Measurement points: 7,936 points

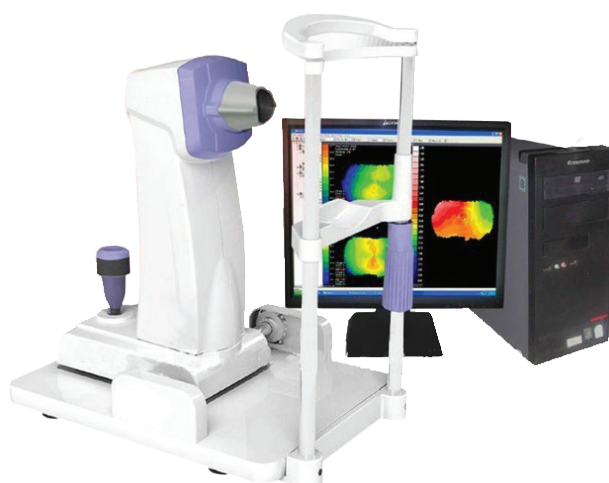
Display axial curvature map, tangential curvature map, elevation map, imitated keratoscope map and 3D cornea map

Image output: High-quality color inkjet printer

Adjust range: left/right 86mm ; forward/backward 40mm ; up/down 30mm ; chinrest 50mm

Cornea contact lenses fitting function

Keratoconus detecting function



ESSE3 srl, Via Garibaldi 30
14022 Castelnuovo D.B. (AT)
Tel +39 011 99 27 706
Fax +39 011 99 27 506
e-mail esse3@chierinet.it
web: www.esse3-medical.com

